

Start Guide



Package Components



Main Camera



Camera Mount



Power Cable



Rear Camera

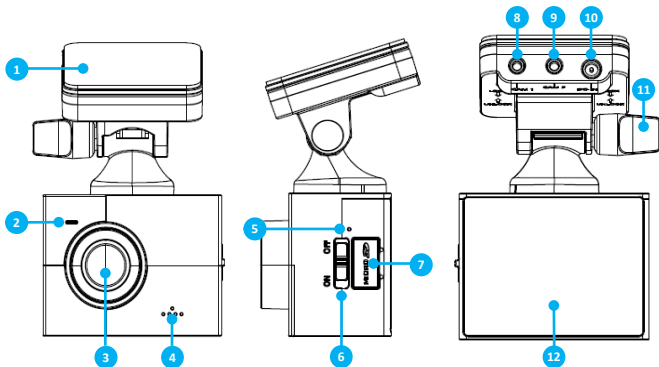


Rear Camera Cable



Micro SD Card

- Please do not access this device while driving. It is extremely dangerous and LCD layout isn't intended for use while driving.
- MOMENTO is not responsible for any data loss and will not compensate for any loss. Also, based on the user's setting and environment, please be informed that the device may NOT record videos of all accidents.
- The device and the recorded videos are intended for reference and personal use only.



Mark	Description
① Mount	Installation mount with GPS
② LED	Security LED (white)
③ Camera Lens	Front camera for video recording
④ Speaker	Voice guidance
⑤ MIC	Microphone for voice and audio recording
⑥ Power	Power ON/OFF switch
⑦ Micro SD	Memory card slot
⑧ CAM1	External camera 1 port
⑨ CAM2	External camera 2 port
⑩ DC-IN	Power cable port
⑪ Tightening Knob	Angle adjustment of the camera
⑫ LCD	LCD touch screen

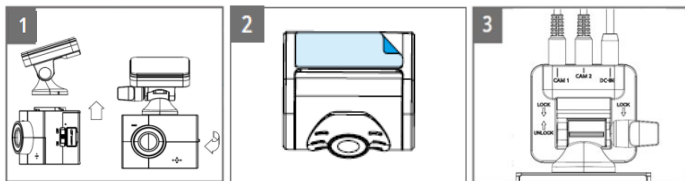
Caution

- Make sure to install the device in a safe area and that the engine is OFF.
- Please check if the Micro SD card is inserted correctly before connecting to power.
- Make sure the installation area is clean.
- Disconnect the power cable if you are not using the device for a long period of time.
- **The power cable on the mount must be unplugged before installing or detaching.**

Caution when inserting Micro SD card

- Do not apply excessive force on the Micro SD card or insert in the wrong direction. Any actions which may cause an SD card error, will be the responsibility of the user.
- Make sure the device is turned off when you pull out the SD card.

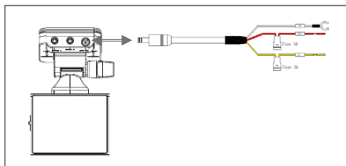
1. Camera installation



- (1) Select and clean the area where the product will be installed.
- (2) Remove the double-sided tape and press firmly onto the cleaned area.
- (3) Connect the main camera and the mount.
- (4) Connect the angled end of the cable to the rear camera and use the straight end of the cable to connect to either Cam 1 or Cam 2 of the camera mount.
- (5) Connect the power cable & remove a sticker from each camera lens.

⚠ To avoid interrupted reception with other devices such as a navigation, make sure the wiring is not overlapped with enough space in between.

2. Connecting Hardwire Cable



BLACK : GND

YELLOW : BAT (B+)

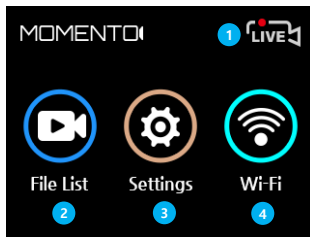
RED : ACC

⚠ Please visit a professional installer to connect hardwire cable.

1. Live View



2. Home Menu

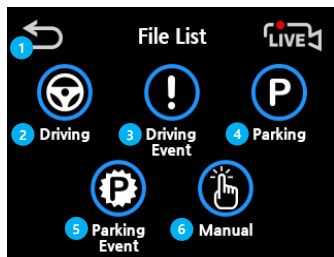


No	Description
①	Real-time driving video
②	Home Menu
③	Microphone On/Off
④	Voice Guidance On/Off
⑤	Vehicle's battery status
⑥	Date
⑦	Time
⑧	Manual Recording
⑨	Camera View Selection

No	Description
①	Back to Live View
②	Recorded Video Files
③	Memory, Camera & System Settings
④	Turn Wi-Fi On/Off

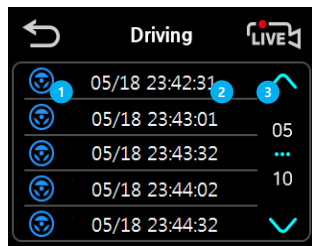
2-1. File List

You can check the recorded video through the file list menu below.



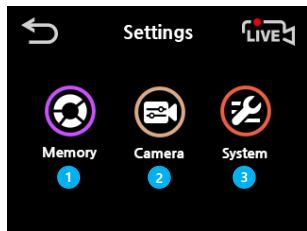
N o	Description
①	Back to the Previous Menu
②	Driving Recordings
③	Driving Event Recordings
④	Parking Recordings
⑤	Parking Event Recording
⑥	Manual Recordings

2-1-1. Playback

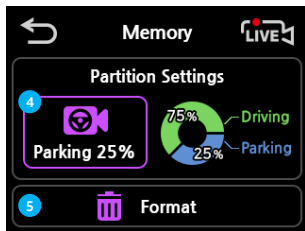


N o	Description
①	Recording Mode Icon
②	Video File (Date / Time)
③	Video File Navigation
④	Camera Selection
⑤	View Previous Recording
⑥	Rewind 5 seconds
⑦	Play or pause video
⑧	Fast-forward 5 seconds
⑨	View Next Recording

2-2. Settings

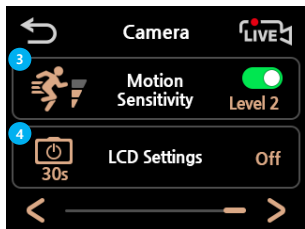
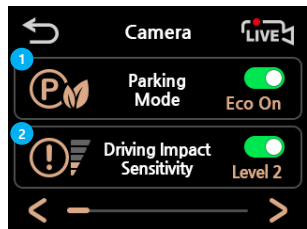


2-2-1. Memory



No	Description
①	SD Card Settings
②	Camera Settings
③	System Settings
④	Parking Mode Capacity Selection
⑤	SD Card Format

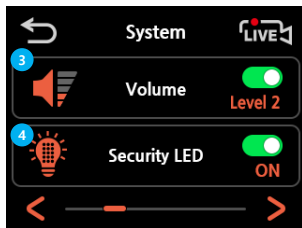
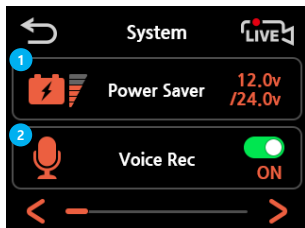
2-2-2. Camera



No	Description
①	Select Parking Mode: Eco On (Radar), Eco Off (Camera Motion), Off
②	A range of 0~5 level (0 is Off)
③	A range of 0~3 level (0 is Off) <i>*Motion Sensitivity will be automatically turned off in Eco Parking Mode</i>
④	LCD operation mode during idle status: Live View, Clock, Off

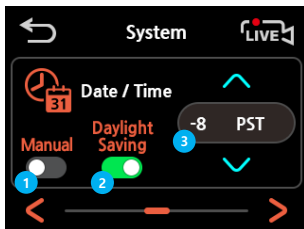
2-2-3. System

Power Saver & MIC & Speak & LED



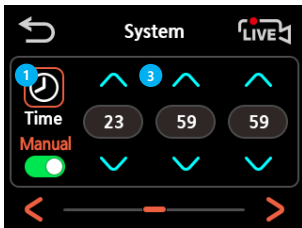
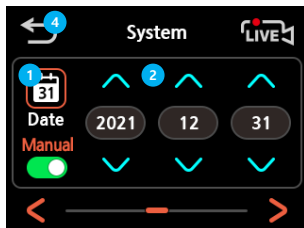
No	Description
①	Low Voltage Camera Shutoff in Parking Mode
②	Microphone On/Off
③	Speaker Volume
④	Security LED On/Off

Time Zone



No	Description
①	Adjust Date/Time Manually
②	Daylight Saving On/Off
③	Time Zone Selection (If Manual mode enabled)

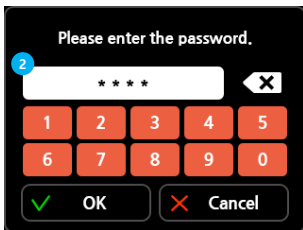
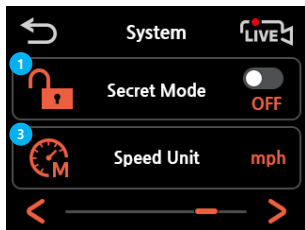
Manual Time Settings



No	Description
①	Select date or time settings.
②	Manual settings for date.
③	Manual settings for time.
④	Click [Back] to apply the changes.

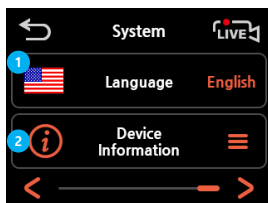
System Secret Mode

The Secret Mode, when enabled, encrypts the dash cam and requires a password to view settings or video files.



No	Description
①	Secret Mode On/Off
②	Set the secret mode password.
③	Select mph or km/h

System information



No	Description
①	Select English or French
②	Displays System Settings and Firmware Version
③	Reset to Factory Settings

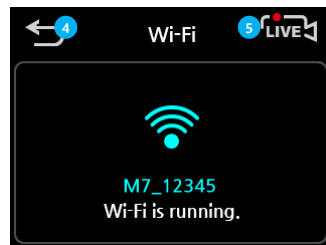
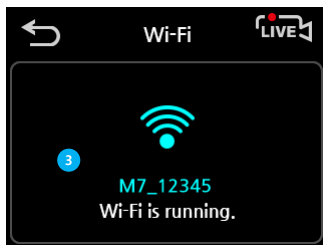
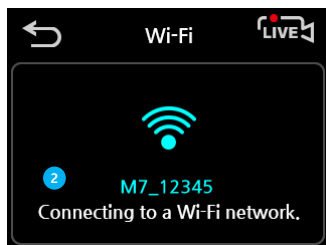
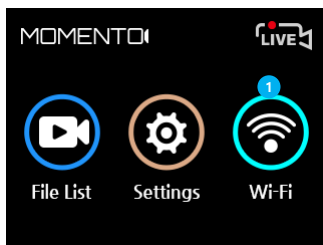
Software Update

Do not turn the product off or remove the memory card while the firmware update is in progress. The stored software may be lost or the product may malfunction.

1. Remove the memory card with the dash cam turned off.
2. Insert the memory card into the memory card reader connected to the PC.
3. Copy firmware for upgrade to the root of the micro SD card
4. Remove the memory card from the memory card reader connected to the PC.
5. Insert the memory card into the product's memory card slot.
6. Turn on the vehicle (ACC ON) or start the engine to turn on the dash cam.
The firmware upgrade will run automatically.
When the firmware upgrade is completed normally,
the product will automatically turn off and then on again.
7. The firmware upgrade is complete.

Using Wi-Fi

You can connect to a Smartphone through the Wi-Fi function to download recorded video, live streaming, and set up the device. Videos are not recorded during Wi-Fi connection.



①	Press to turn Wi-Fi On.
②	When searching for Wi-Fi on a mobile device, it is displayed in the format M7_XXXXXXX.
③	Displayed when connection to the M7 Wi-Fi mobile app is successful
④	Press the [BACK] button to turn Wi-Fi off.
⑤	Press the [LIVE] button to turn Wi-Fi off.

1. Download M7 Wi-Fi PC Viewer

- Open the Internet browser then download the PC Viewer on the following link in below. <https://momentocam.com/resources>

2. PC Viewer Compatibility

- The PC Viewer is compatible for both Windows and Mac OS Computers.



3. PC Viewer Manual

- Open the Internet browser then download the manual on the following link in below. <https://momentocam.com/resources>

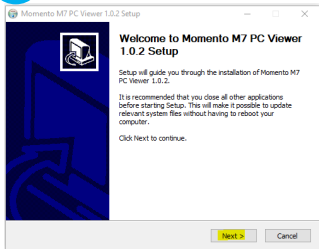
Specifications

Item		Description
Micro SD Card Capacity		Up to 256GB
Camera FOV	Front	135°(D) x 113°(H) x 61°(V)
	Rear	146°(D) x 116°(H) x 62°(V)
ECO Mode Operation		24GHz Radar Sensor Motion detection
GNSS Support		GPS, BEIDOU Built-In Support
Input Power Source		DC 12V / 24V
Operation Temperature		-20° ~ +60°

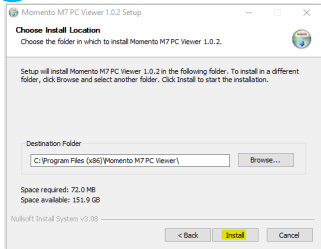
4. Installation of PC Viewer

Please follow the steps below to install the PC Viewer

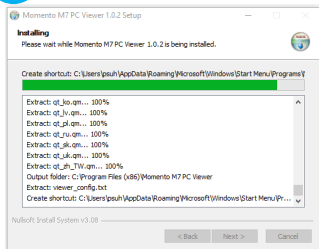
1



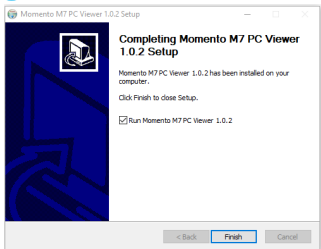
2



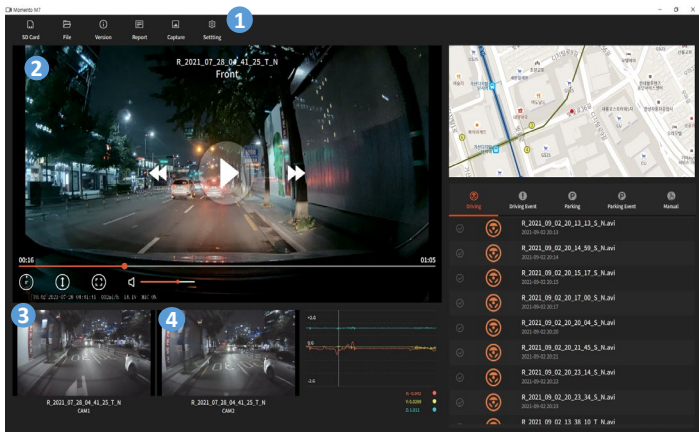
3



4



PC Viewer Functions



NO	Description
①	Main Menu
②	Front Camera View
③	External Camera View (CAM1)
④	External Camera View (CAM2)
⑤	Shock Sensor Graph
⑥	GPS Tracking
⑦	Play List

This device complies with Industry Canada's licence-exempt RSSs.

"Operation is subject to the following two conditions: (1) this device may not cause interference, and (2) this device must accept any interference, including interference that may cause undesired operation of the device."

Le présent appareil est conforme aux CNR d'Industrie Canada applicables aux appareils radio exempts de licence. L'exploitation est autorisée aux deux conditions suivantes : (1) l'appareil nedoit pas produire de brouillage, et (2) l'utilisateur de l'appareil doit accepter tout brouillage radioélectrique subi, même si le brouillage est susceptible d'en compromettre le fonctionnement.

"This Class B digital apparatus complies with Canadian ICES-003."

Cet appareil numérique de la classe B est conforme à la norme NMB-003 du Canada.

"This device and its antenna(s) must not be co-located or operating in conjunction with any other antenna or transmitter."

Cet appareil et son antenne (s) ne doit pas être co-localisés ou fonctionnant en conjonction avec une autre antenne ou transmetteur.

"This equipment should be installed and operated with a minimum distance of 20cm between the radiator and your body"

Cet équipement doit être installé et utilisé à une distance minimale de 20cm entre le radiateur et votre corps.

"It is the responsibility of the installer to ensure that when using the outdoor antenna kits, only those antennas certified with the product are used. The use of any antenna other than those certified with the product is expressly forbidden by FCC rules 47 CFR part 15.204 and IC RSS standards."

Il est de la responsabilité de l'installateur de s'assurer que lorsque vous utilisez les kits d'antennes extérieures, seules les antennes certifiées avec le produit sont utilisés. L'utilisation d'une antenne autre que ceux qui sont certifiés avec le produit est expressément interdite par la réglementation FCC partie 47 CFR 15.204 et IC normes RSS.